



# RESIDENTIAL SPACES

**FOR RESIDENCES**

---

**FOR WORLD**

**FOR RESIDENCES**

---

**FOR WORLD**

We silently touch your life at every space which forms a part of your day starting from

**Homes** • Offices • Recreational Spaces • Hospitality • Health Care • Retail

that makes it almost everywhere

HERE, WE WILL TAKE YOU ON A JOURNEY TO SHOW HOW GREENLAM HAS BEEN ADDING  
VALUE AND BEAUTIFYING

## RESIDENTIAL SPACES

KEEPING THE BALANCE BETWEEN FUNCTIONALITY, SUSTAINABILITY AND AESTHETICS.

## PRODUCTS FOR RESIDENCE

### WHAT

#### **Laminates/HPL**

Antibacterial Laminates  
Anti-finger Print (AFX) Laminates  
Unicore Laminates, HD Gloss Laminates  
Fire-Retardant Laminates

#### **Compact Boards**

Standard Compact Panel  
Countertops/Worktops  
Shower Surfaces Restroom & Locker  
Solutions Façades

#### **Decorative Veneers**

Ply backed Veneers, Veneered MDF,  
fleece back and Veneered Laminate.

### WHY

Due to being trendy & in-style decors, that come with superior functionality & safety features like | "Antibacterial", "Anti-finger Print", "High physical and Chemical Properties", Greenlam Laminates/HPL find usage across all areas of a home.

These Self Sustainable boards/panels (12mm-30mm) with high hygiene and performance due to properties like antibacterial, anti fungal, anti termite, high UV resistance are a perfect fit for homes.

Decowood has one of the largest veneer collections to choose from. Whether you are looking for Naturals, Engineered, Teak or the Specials, it has got your home covered. Our Pre-Polished Veneers are ready to use, Scratch-Resistant, highly durable surfaces come with a superior finish making it an ideal solution for special areas with its unmatched quality aesthetics.

### WHERE

Wall-Paneling, Furniture & Fitments  
like Cabinets, Closets, Study Units, Storage Units etc.

Facades, Wall-Paneling, Furniture & Fitments,  
Wet areas, Worktops/Countertops.

Furniture & Fitments, Wall-Coverings, Displays.

## PRODUCTS FOR RESIDENCE

### WHAT

#### **Engineered Wooden Floors**

#### **Engineered Door sets (Door + Frames)**

### WHY

Engineered for stability these tender under foot, temperature neutral, environment friendly floors maintains good indoor air quality, making them an ideal choice for interior flooring. Truly a symphony of shades, surfaces and textures, Mikasa Floors is a great way to create timeless pizzazz to any room.

These ready to use door & doorsets with perfect finish, faster installation, shorter lead times and high function properties such as up to 120min fire resistance, antibacterial properties and apt hardware are a perfect amalgamation of style & functionality imparting a classy look to your home.

### WHERE

Anywhere in the interiors-  
common areas and rooms.

Anywhere in the interiors-  
common areas and rooms.

## PRODUCTS BY SPACES

AREAS	BRAND	USAGE
<b>Exterior Facades</b>	Greenlam Exterior Clads	Building facades, external wall cladding,
<b>Entrance</b>	Greenlam Exterior Clads	Main Gate.
<b>Balcony/Porch</b>	Greenlam Exterior Clads	Parapets, Soffits
<b>Pool Area</b>	Greenlam Exterior Clads	Wall Cladding
<b>Ceilings</b>	Greenlam Compacts, Mikasa Floors	Roof Paneling
<b>Stairs</b>	Mikasa Floors Staircase Solution	Wooden Staircase
<b>Kitchen</b>	Greenlam Stratus, Greenlam AFX Laminates & Compacts , Greenlam HD Gloss, Greenlam Fire-Retardant Laminates, Mikasa Doors	Worktops/Countertops, Breakfast Bars, Upstands, Splashbacks Shutters, FR-Doors
<b>Living Room</b>	Greenlam Unicore , Greenlam Compact Laminates, Mikasa Floors , Mikasa Doors & Frames, Decowood Veneers	Table Tops, Display-Shelves, Wall/Columns Cladding, Flooring, Doors
<b>Entertainment/Recreation Room</b>	Mikasa Floors, Greenlam Fire-Retardant Laminates, Mikasa Doors & Frames, Decowood Veneers.	Wall Paneling, Tables, Cabinets, Flooring, Acoustic Doorsets

## PRODUCTS BY SPACES

### AREAS

### BRAND

### USAGE

**Study/Home Office**

Greenlam Laminates & Compact Laminates, Mikasa Floors, Mikasa Doors & frames

Study Table, File-cabinets, Flooring, Acoustic Doorsets

**Reading Room/Library**

Greenlam Laminates & Compact Laminates, Mikasa Floors, Mikasa Doors & frames.

Book- Shelves, Shutters, Flooring, Acoustic Doorsets

**Bedrooms**

Greenlam Laminates & Compact Laminates, Mikasa Floors, Mikasa Doors & Frames, Decowood Veneers

Beds, Cabinets, Closets, Wall- Paneling, Flooring, Doors

**Kids Room**

Greenlam Digital laminates, Greenlam Compacts, Mikasa Floors

Beds, Storage Units, Cupboards, Doors, Flooring, Study Units

**Dressing Room**

Greenlam Laminates & Compact laminates, Mikasa Floors, Mikasa Doors

Vanity Unit, Cabinets, Closets, Floor, Doors

**Washrooms**

Greenlam Compact laminates, Greenlam Shower Surfaces

Wet areas - Shower Panels, Wash Basin Counters, Vanity Units





## **KEY PRODUCTS & APPLICATION AREAS IN RESIDENCES**



**FACADES** | PRODUCT - GREENLAM EXTERIOR CLADS



**ENTRANCE - MAIN GATE**  
PRODUCT - GREENLAM EXTERIOR CLADS



**POOL AREA - WALL CLADDING**  
PRODUCT - GREENLAM EXTERIOR CLADS



**PORCH - SOFFITS**  
PRODUCT - GREENLAM EXTERIOR CLADS

**BALCONY - PARAPETS**  
PRODUCT - GREENLAM EXTERIOR CLADS



**CEILING** | PRODUCT - MIKASA FLOORS



**STAIRCASE** | PRODUCT - MIKASA STAIRCASE SOLUTION



**KITCHEN - WORKTOP/BREAKFAST BAR/SPLASHBACK/UPSTANDS**

PRODUCT - GREENLAM COMPACTS/GREENLAM STRATUS



## **KITCHEN - WORKTOP/BREAKFAST BAR/CABINETS**

PRODUCT - **GREENLAM AFX LAMINATES & COMPACTS**





**KITCHEN - CABINETS/SHUTTERS**

PRODUCT - GREENLAM HD GLOSS LAMINATES & COMPACTS



**KITCHEN - DOOR/SHUTTERS**

PRODUCT - GREENLAM FR LAMINATES/MIKASA FR DOORS



## **LIVING ROOM - WALL CLADDING**

PRODUCT - **GREENLAM COMPACTS / GREENLAM INTERIOR CLADS**



## **LIVING ROOM - DISPLAY UNITS/SHELVES**

PRODUCT - **GREENLAM UNICORE LAMINATES & COMPACT LAMINATES**



## **LIVING ROOM - WALL PANELING DISPLAY UNITS/SHELVES**

PRODUCT - **GREENLAM LAMINATES & COMPACTS**



## **LIVING ROOM - WALL PANELING, FURNITURE & FIXTURES**

PRODUCT - **DECOWOOD VENEERS**



## **LIVING ROOM - FLOORING, FURNITURE & FIXTURES, WALL-PANELING**

PRODUCT - MIKASA FLOORS & DECOWOOD VENEERS



## **LIVING ROOM - DOORS**

PRODUCT - GREENLAM DOOR LAMINATES, MIKASA DOORS & FRAMES



## **WASHROOMS - WET AREAS**

PRODUCT - **GREENLAM COMPACT LAMINATES/GREENLAM SHOWER SURFACES**





## **BEDROOM - WALL CLADDING, FURNITURE, FLOOR**

PRODUCT - GREENLAM LAMINATES, MIKASA FLOORS



## **BEDROOM - FURNITURE (CUPBOARDS, SIDE TABLE)**

PRODUCT - **GREENLAM LAMINATES**



## **BEDROOM - WALL CLADDING/PANELING, FLOOR**

PRODUCT - MIKASA FLOORS, DECOWOOD VENEERS



## **KIDS ROOM - FURNITURE & FITMENTS, FLOOR**

PRODUCT - GREENLAM LAMINATES & COMPACTS, MIKASA FLOORS



## **KIDS ROOM - FURNITURE & FITMENTS, FLOOR**

PRODUCT - **GREENLAM LAMINATES & COMPACTS, MIKASA FLOORS**



## **KIDS ROOM - WALL PANELING, FURNITURE & FITMENTS, FLOOR**

PRODUCT - GREENLAM LAMINATES & COMPACTS, GREENLAM DIGITAL LAMINATES, MIKASA FLOORS



## **DRESSING ROOM - VANITY UNIT, CABINETS, CLOSETS**

PRODUCT - GREENLAM LAMINATES & COMPACTS



## **READING ROOM/LIBRARY**

PRODUCT - **GREENLAM LAMINATES & COMPACTS, MIKASA FLOORS**





## **HOME OFFICE - FURNITURE & FITMENTS**

PRODUCT - GREENLAM LAMINATES & COMPACTS



## **HOME OFFICE - FLOORING**

PRODUCT - **MIKASA FLOORS**



## **ENTERTAINMENT/RECREATION ROOM**

PRODUCT - **DECOWOOD VENEERS**



## **DOORS - BEDROOM, KIDS ROOM**

PRODUCT - **MIKASA DOORS & FRAMES, GREENLAM DOOR LAMINATES**



## **DOORS - HOME OFFICE/STUDY, KITCHEN**

PRODUCT - **MIKASA DOORS & FRAMES**



**FIRE DOORS FOR SAFETY**



**KEY  
RESIDENTIAL  
PROJECTS  
BY GREENLAM**



**PARKLAND, COMBODIA** | PRODUCT - GREENLAM LAMINATES





**MARIDIEN BGC, PHILIPPINES** | PRODUCT - GREENLAM LAMINATES



**GENERAL TRIAS CAVITE, PHILIPPINES** | PRODUCT - GREENLAM LAMINATES



**ONE SHANGRI - LA PLACE, PHILIPPINES** | PRODUCT - GREENLAM LAMINATES



**HOME, BRUNEI** | PRODUCT - GREENLAM LAMINATES



**HOME, BRUNEI** | PRODUCT - GREENLAM LAMINATES



**APARTMENT, THAILAND** | PRODUCT - GREENLAM LAMINATES



**APARTMENT, THAILAND** | PRODUCT - GREENLAM LAMINATES



**HOME, THAILAND** | PRODUCT - GREENLAM LAMINATES





**HOME, THAILAND** | PRODUCT - GREENLAM LAMINATES



**MANTANA HOME, THAILAND** | PRODUCT - GREENLAM LAMINATES



**LE MONACO, THAILANDA**  
PRODUCT - GREENLAM LAMINATES



**ASTON ASOKE, THAILAND**  
PRODUCT - GREENLAM LAMINATES

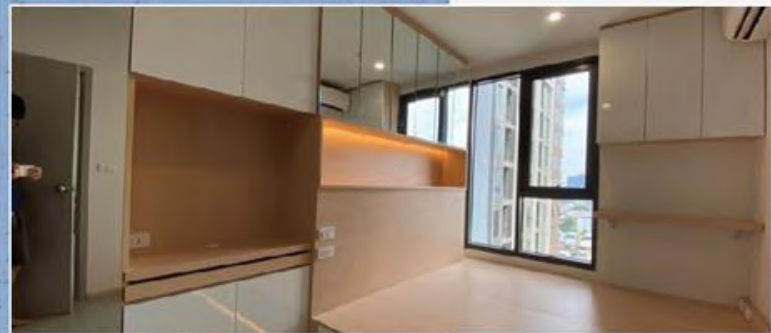


## **PARK LAND CONDOMINIUM, THAILAND**

PRODUCT - GREENLAM LAMINATES



**CONDO SK.55, THAILAND** | PRODUCT - GREENLAM LAMINATES



**HOME, THAILAND** | PRODUCT - GREENLAM LAMINATES



**PREMAVINLA, THAILAND** | PRODUCT - GREENLAM LAMINATES



**KRAT, THAILAND** | PRODUCT - GREENLAM LAMINATES





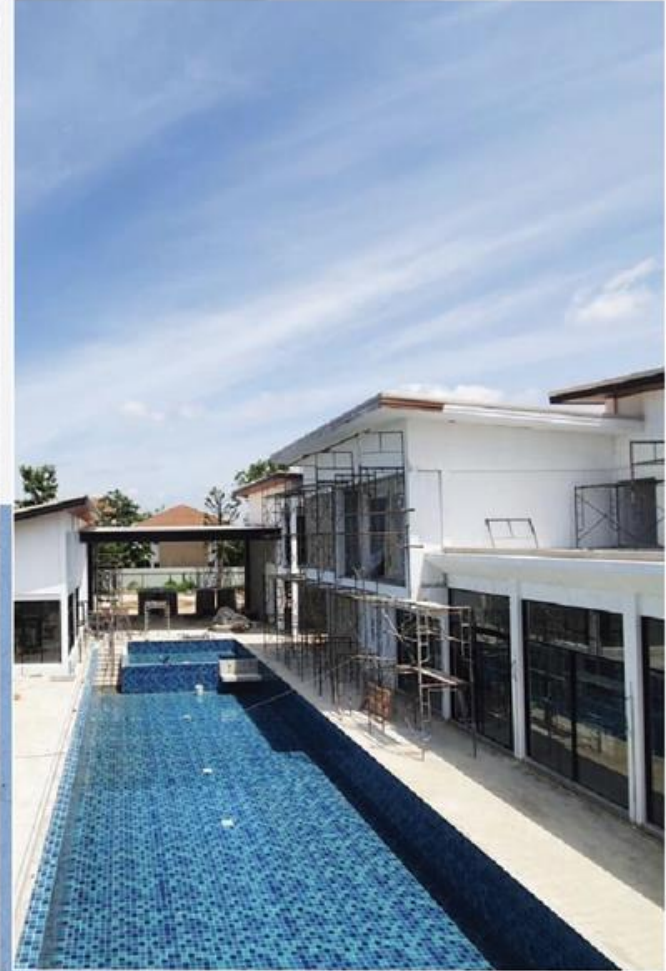
**HOME, THAILAND** | PRODUCT - GREENLAM LAMINATES & COMPACT LAMINATES



**GRAND BANKOKO, THAILAND** | PRODUCT - GREENLAM LAMINATES



**APARTMENT, THAILAND** | PRODUCT - GREENLAM LAMINATES



**LAGUNA VILLAGE, THAILAND** | PRODUCT - GREENLAM LAMINATES



**LAGUNA VILLAGE, THAILAND** | PRODUCT - GREENLAM LAMINATES



**BURASIRI @ KHONKHEN, THAILAND**

PRODUCT - GREENLAM LAMINATES



**PARC CENTRO CONDO, SINGAPORE** | PRODUCT - GREENLAM LAMINATES



**LINVICI TPY, SINGAPORE** | PRODUCT - GREENLAM LAMINATES





**KNU 38 @ BANGSAR, MALAYSIA** | PRODUCT - GREENLAM LAMINATES



**THIRD PARAGRAPH, SINGAPORE** | PRODUCT - GREENLAM LAMINATES



**EATON RESIDENCE, MALAYSIA** | PRODUCT - MIKASA FLOORS



**BUNGALOW, INDIA** | PRODUCT - GREENLAM LAMINATES



**HOME, INDIA** | PRODUCT - GREENLAM LAMINATES



**HOME, INDIA**

PRODUCT - GREENLAM CLADS - EXTERIOR GRADE

**FOR RETAIL**

---

**FOR WORLD**

CREATED IN **INDIA.**  
CHERISHED ACROSS THE **WORLD.**







## DOMESTIC

**2** State of the art Manufacturing Facilities.

**14** Company Owned Regional Distribution Centres.

**14,000+** Distributors, Dealers & Retailers.

**4500+** Professionals.

**21** Branch Offices.

Present in **100+** Countries.

**4** Company Operated Distribution Centre.

**5** International Branches /Rep Offices.

**8** Overseas Subsidiaries.

**100+** Overseas Employees.



## INTERNATIONAL

## STATE OF THE ART MANUFACTURING FACILITIES

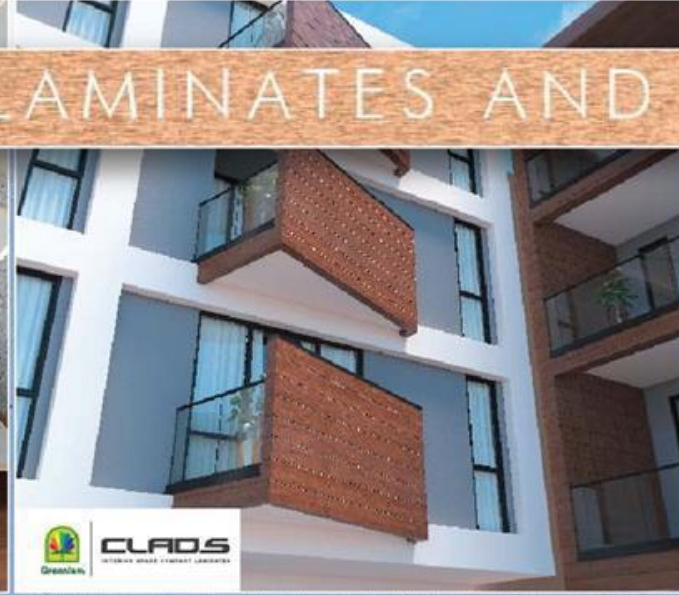


Products Manufactured: Laminates and Compacts  
**NALAGARH UNIT**



Products Manufactured: Laminates, MFC Veneers, Floors & Doors  
**BEHROR UNIT**

# SPECIALITY-LAMINATES AND COMPACTS



# VENEERS, FLOORS, AND DOORS.



## Capacities & Capabilities

*Laminates & Compact Laminates*

15.62 Mn Sheets

*Decorative Veneers*

4.20 MnSqm

*Engineered Wooden Flooring*

1 MnSqm

*Engineered Door Sets*

0.12 Mn Doors

*Melamine Faced Chipboard-MFC*

2 MnSqm

\*All mentioned values are on per annum basis.

# ALL GREENLAM PRODUCTS COME WITH HEALTH AND HYGIENE ASSURANCE



Greenlam Laminates has been developed using **SAFEGUARD PLUS™** technology that involves modifying the resin formulations such that the bioactive ingredients completely disperse with resin and retain their efficacy in the thermoset product.



The product is manufactured with the benefits of being Antivirus, Antibacterial and Antifungal and at the same time, low on VOC emission levels as per the Greenguard Gold standards.

# DO YOU KNOW?



## Indoor Air Quality

- | Humans Spend 90% Of Their Time Indoors.
- | Indoor Air Is Typically 2-5 Times More Polluted, And At Times Can Be As Much As 1000 Times More Than Outside Air.

Source: Greenguard Environmental Institute

# The Greenlam Edge

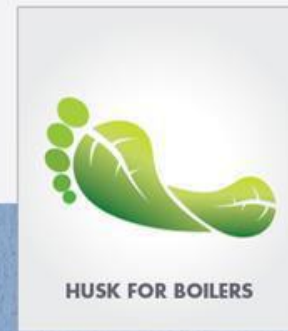
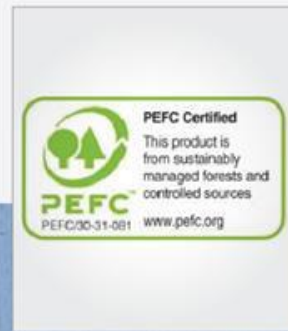
Good for  
environment

| Keeps Your Indoor Air Quality(Iaq) Cleaner

| Emits Minimal Amount Of Volatile Organic Components



# WE CARE FOR PEOPLE AND PLANET





## GREENLAM LAMINATES



## GREENLAM LAMINATES

- Laminate category has witnessed a drastic change in terms of design evolution and product performance.
- It graduated from a commodity product to be a lifestyle and low maintenance surfacing option.
- Greenlam offers variety of laminates catering to various application needs starting from liners to specialized material for segments like hospitality, health, education, retail, commercial and residential.
- It comes in varied dimensions and thickness.
  - Dimensions offered: 3'X7', 4'x8', 4'x10', 4.25'x10', 5'x12'.
  - Thickness: 0.65mm: 1.5mm.

## **GREENLAM LAMINATES**

- We offer wide décor palette of 500+ decor in line with the latest design trend.
- Premium décor prints sourced from Europe & Japan which provides colour consistency and sharp print.
- No Urea content or other harmful chemicals used in our manufacturing process.
- Greenlam Laminates come with Anti-bacterial & Anti-virus properties.
- Our products are available across the globe via strong distribution network for faster deliveries.

## SPECIALTY LAMINATES





## HD GLOSS LAMINATE

- Best Gloss Level.
- Superior Abrasion Resistance.
- Superior MAR Resistance.
- Superior Scratch Resistance.
- Comparatively economical to all other surfacing finish like PU, DUCO.



- Premium wood finish laminate.
- This finish gives a look of real veneer.
- VRB provides the appearance of dry matte finish which is a strong fashion direction of surface finishes now.



- Premium Soft Touch.
- Superior Scratch Resistant.
- Hydro Repellent.
- Non-Porous & Water Proof.
- Easy to clean – Dust, Oil & Grease Repellent.
- Highly Resistant to Chemicals.
  
- Sizes: 1300mm x 3050mm, i.e. 4.25' x 10'.
- Thicknesses: 0.8mm – 24 mm.
- Colours: White, Black, Eden Grey and Anthracite.



## DOOR SPECIALS

3'x7' LAMINATE

- Wide Handpicked Collection of 125+ decors.
- High Performance Properties.
- Antibacterial and Antivirus .



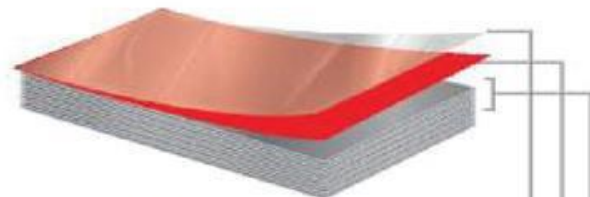
## UNICORE LAMINATES - GOODBYE DARK EDGES



### Unicore Construction

Tissue overlay (for print decors) impregnated with melamine resins

Solid or print design paper layer impregnated with melamine resins



### Regular Laminate Construction

Tissue overlay (for print decors) impregnated with melamine resins

Solid or print design paper layer impregnated with melamine resins

Kraft paper layers impregnated with formaldehyde resins



## UNICORE LAMINATE

- A solution for high-end interiors.
- Single Core Laminate.
- High Abrasion - 3000 cycles as compared to 350 abrasion cycles of regular laminates.
- Ideal for both horizontal or vertical application.

SIZES: - 4' x 8'

THICKNESSES: - 0.8 mm THICKNESS

COLOURS: - 6 DECORS AVAILABLE IN SUEDE AND HD GLOSS FINISH

## BREAK THE CONVENTIONAL



### DIGITAL & CUSTOM HPL & COMPACT

- Hi Resolution Digital laminate collection.
- Made using special digital technology.
- Manufactured with special décor paper.
- Hi resolution print quality.
- Over 250 off the shelf decors.
- Customized option also available.



## CHALK & MARKER GRADE LAMINATE

- Made with decorative surface papers that are impregnated with special melamine resins & pressed over Kraft paper core sheets impregnated with phenolic resins.
- OEM Presses the sheet on Particle board/Plywood/MDF.



## CHALK & MARKER GRADE LAMINATE

- No Ghost effect – Leaves no marks.
- Easy to clean – The board turns spotless in a single wipe and performs well for a long time and requires negligible maintenance.
- Green Guard Certified (Indoor + school & children) – No emission of any harmful gases making it good for using in classrooms.
- Sizes: 4'x8' | **Thicknesses:** 0.8 - 1 mm | **Colours:** 4 (Chalk Grade: Army Green & Black, Marker Grade: White, Square Grid).

## OTHER OFFERINGS

### ANTI STATIC LAMINATES

- Ideal for IT Firms, Electronic Industries, Laboratories.
- Call Centre, where highly effective electrostatic dissipative protection is needed.

### FIRE RETARDANT LAMINATES

- Treated with special fire retardant chemicals which minimizes smoke emission.
- Ideal for Multiplexes, Colleges, Libraries, Offices , Hospitals.

### POST FORMING LAMINATES

- Ideal for Countertop, Shutters Furniture Tops.



Greenlam  
LAMINATES

## GREENLAM COMPACT PANELS



## OTHER OFFERINGS

### BOARDS

- Standard Compact Boards.
- Specialty Boards.

### SERVICE ORIENTED SOLUTIONS

- Restroom Cubicles.
- Locker Solutions.
- Kitchen Solution.
- Furniture Accessories.

### CLADDING SOLUTIONS

- Exterior Façade Panel.



**COMPACT  
LAMINATE**

## SELF SUSTAINABLE BOARDS/PANELS MADE WITH DECORATIVE SURFACE PAPERS WITH DÉCOR FINISH ON BOTH SIDES



**COMPACT  
LAMINATE**



- Compact boards are now gaining popularity in the furniture industry in commercial & residential spaces.
- Kids furniture.
- Table Tops.
- Benches.
- Kitchen counters.
- Interior Panelling.
- Dimensions offered: 4'x8', 4'x10', 4.25'x10', 5'x12', 6'x12'.
- Thickness: 3mm – 25mm.



**COMPACT  
LAMINATE**

## SPECIALTY COMPACTS



## RESISTS 100+ CHEMICALS, SOLVENTS & BASES



**LAB GUARDIAN**  
CHEMICAL RESISTANT HPL & COMPACT

## HIGH END FURNITURE FOR BOTH RESIDENTIAL AND COMMERCIAL SPACE



**SANDWICH  
COMPACT  
LAMINATE**

## HIGH END FURNITURE FOR BOTH RESIDENTIAL AND COMMERCIAL SPACE, WITH NO DARK EDGES



**UNICORE  
COMPACT  
LAMINATE**



## RESTROOM CUBICLE AND LOCKER SOLUTIONS



- Greenlam Sturdo restroom cubicles are designed for flawless performance and durability
- Engineered with cutting edge Japanese technology, they ensure little maintenance, translating to huge savings and of course, your peace of mind.
- The Zero Maintenance Restroom Cubicle System
- 'Floor-Free' Construction
- Partitions/doors from 12mm
- Heavy-duty compact laminates
- Polyamide/Stainless Steel accessories for trouble-free service

## GREENLAM RESTROOM CUBICLE



## GREENLAM LOCKER SYSTEMS





# GREENLAM CLADS

## NEW AGE FAÇADE SOLUTION



## WHY CLADS?



FIRE  
RESISTANT



EXCELLENT  
ANTI-GRAFFITI  
PROPERTIES



CHEMICAL  
RESISTANT



ENERGY  
EFFICIENT



MATCHING  
RIVETS



ANTI-DUST



MOISTURE  
RESISTANT



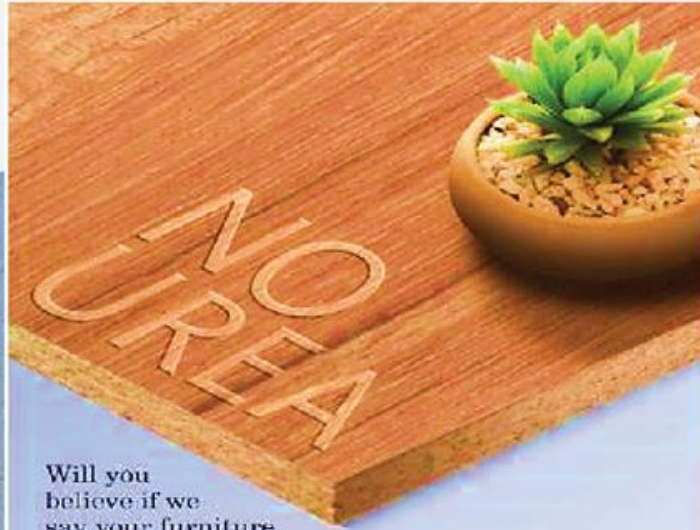
ENVIRONMENT  
FRIENDLY



can withstand extreme  
temperature conditions from  
-60°C to +80°C



SUPERIOR LIGHT  
FASTNESS PERFORMANCE  
(UV RESISTANCE)



Will you believe if we say your furniture can poison the indoor air more than outdoor air in the industrial areas?

**BELIEVE IT!**

Longer life.

More abrasion resistant.



Let's unmask a toxic fact! The commonly used chipboards are loaded with urea which can cause asthma and other chronic lung diseases. It's time we move up to a responsible choice like urea-free surfaces of Greenlam Melamine Faced Chipboards.

www.greenlam.com



- 100 % Melamine Formaldehyde on its Surface, Urea Free Surface
- European & Japanese Décor paper.
- Standard Thickness (9mm, 12mm, 18mm, 25mm)
- Standard Size – 8'x4' , 8'x6' , 9'x6'
- Exquisite wide range of Decors available from Greenlam range



DOORS THAT FIT IN  
EVERY DESIGN





## **DOORS AND DESIGNS**

**MIKASA DOORS & FRAMES GIVE YOU  
THE COMPLETE FREEDOM TO CREATE  
UNIQUE DESIGNS TO SUIT YOUR NEEDS**



# COMPLETE DOOR SOLUTIONS

Innovation must serve a need. If it doesn't, innovation is pointless. Mikasa Doors & Frames have been designed to suit every need and purpose. Their design and performance have been crafted to match a wide range of sectors and applications.

## **RESIDENTIAL**

---

Be it high-end homes or penthouses, Mikasa Door & Frames offer ready and ideal solutions for all types of residential projects. Bespoke interior doorsets in contemporary designs are available to meet the building's interior design scheme.



## OFFERINGS: MIKASA DOORS & FRAMES



### COMPLETE DOOR SOLUTIONS

Available in fire rating of FD30, FD60, FD90, and FD120 with thickness of 44mm, 54mm, and 64mm respectively.

Mikasa Fire Rated Doorsets provide a safe exit in case of fire emergency by preventing the spread of fire and smoke. It's an integrated fire protection system with a fire door leaf, frame, and fixtures that comply with BS476 Part 22 and carry Exova, BM Trada, Q-Mark certification and IS:3614. Mikasa fire rated doors & door sets are now CBRI certificated with 60 mins fire rating .

Available in fire rating of FD30, FD60, FD90 and FD120 with thickness of 44 mm, 54mm and 64mm respectively.



## OFFERINGS: MIKASA DOORS & FRAMES



### NON-FIRE RATED DOORS & DOORSETS

Available in varying thickness of 32mm, 35mm, 38mm, and 44mm.

These doorsets are made of 3 layers with a solid core/tubular core which is sturdy and load bearing. It has various applications in residential and commercial spaces, where fire doors are not mandatory. Unfinished door leaf can also be supplied with either veneer or HPL facing, which can be resized up to 10mm on each side.





## OFFERINGS: MIKASA DOORS & FRAMES



### SPECIALITY DOORSETS

**Radiation Shielding/Clean Rooms:** Constructed for areas exposed to high levels of radiation. These are available with or without vision panels.

**Acoustics:** Designed to achieve optimum level of sound reduction in the range of 29-45dB with thickness varying between 38mm to 44mm.



## WHY CHOOSE US

- **Complete Package:** Doors, frames and accessories are shipped from factory as a fully finished single doorset.
- **Superior Raw Materials:** High quality of imported raw material and the premium quality of decowood veneers and greenlam laminates is used. Even the hardware comes with a mikasa badge.
- **Perfect Match:** Door frames and panel have matching look and finish as a decorative veneer and laminates are made-in-house.
- **Strengthened For Stability:** The unitized construction of mikasa engineered doors makes it stronger than wooden doors. The factory finish ensures a comprehensive 6-sides protection shielding the door against hostile weather.
- **Made To Fit:** The factory finished door & frame doesn't require resizing.
- **Crafted To Last:** The doorset is backed with up to 5 year performance guarantee. Superior product design, manufacturing and installation processes result in lifetime performance with minimal maintenance.
- **Factory Finished:** UV lacquer and polishing line used in the process follow latest European practices leading to rich colour and lustre in doors.
- **Global Certifications:** Mikasa Doors & Frames hold ISO 9001, ISO 14001, ISO 18001 & FSC-Certification. The fire doorsets also comply to BS476 Part 220 mark fire testing certification.



# CERTIFICATIONS AND COMPLIANCE



## FSC Certified (TT-COC-001844)

Mikasa Doors & Frames are FSC certified which ensures that all our raw materials come from responsibly managed forests. We only use ethically sourced wood without disturbing the natural balance of our ecosystem.



## Fire Resistance Tested

Mikasa Fire Rated Doorsets are certified by Spectra Analytical Labs limited for successfully passing Fire Resistance test for integrity, stability, and insulation and also complies with the requirements of IS:3614.



## ISO 18001

We operate a health and safety management system which complies with the requirements of ISO 18001.



## Exova BM Trada, Q-Mark Certifications

We are the only doorset manufacturer in India which is fully certified by the BM IRADA intensive Q-Mark scheme and comply to 135476 Part 22 of Use approved documents. Our FD 30, 60, 90, and 120 minutes doorsets carry a tamper evident and fully traceable label incorporating clear and essential information.



## ISO 9001 S. 14001

We operate a quality management system which complies with the requirements of ISO 9001: 2008 & 150 14001.



## CBRI FR60 CERTIFIED

We are India's only true fire rated doorsets with CBRI certification of 60 mins fire.



— AN —  
OVERVIEW



**A sign of welcoming a cherished guest, the name is derived from the Spanish phrase, "Mi Casa. Su Casa." Which means, "My Home is Your Home." It's the first Indian Global Brand of Engineered Wood Floors.**

Made for the first time in India, Mikasa is the only manufacturer of real wood floors. With over 100 products, its wide-ranging collection brings together the most exotic species of wood from around the world, engineered to perfection with the latest European technology.



## WHY CHOOSE MIKASA



Mikasa floors **are real wood floors** which exude the natural characteristics of wood. Incorporating nature into the built environment is not just a luxury, but a **sound economic investment in well-being**, based on well researched neurological and physiological evidence it reduces stress.

**When People feel close to nature , they are more likely to relax . Mikasa Floors allow subconscious sense of comfort channeling the nature's serenity at home.**

Truly a symphony of shades, surfaces and textures, Mikasa Floors also perfectly integrate into, and serve to illuminate, the artistic vision you hold for your Home.

## PRODUCT USAGE



# **MIKASA ADVANTAGE**



## WHY PREFER WOODEN FLOORS OVER LAMINATE/VINYLFLOORS FOR HOMES

### Indoor Air Quality

- The Engineered wooden floors are environment friendly and all the lacquers and stains used for them are water based, making these floors practically VOC free and healthy to live, thus preferred for Homes.
- On the other hand, Laminated Floors are usually made with a resin composed of melamine and formaldehyde. Formaldehyde emissions cause environmental and health concerns.

### Easy to Live on

- The soft feel of the modern floating wood floor make the floors good for people unlike the laminated floors which because of their synthetic construction have a coarse texture.

## WHY PREFER WOODEN FLOORS OVER LAMINATE/VINYLFLOORS FOR HOMES

### Temperature Neutral

- Engineered Wooden floors are made of Real Wood which is temperature neutral, allowing it to be used in most extreme cold climates whereas an imitation like a Laminate floor will not give the same result

### Long Life & Easy Maintenance

- Mikasa Real wood floors are durable, more stable and come with a warranty of 10 years. These require minimal maintenance and need to be re-sanded and polished after about 10-12 years of usage. Laminate floors on the other hand have a shorter life and are easily prone to scratches with regular usage.

### Ease of Installation

- Mikasa Floors are pre finished planks and the unique glue less technology , Plankloc helps to get these floors installed almost instantly.



SUPERIOR TECHNOLOGY

SUPERIOR PRODUCT

# WHAT WE OFFER

SUPERIOR NETWORK & SERVICE

## CONSTRUCTION



MIKASA  
ENGINEERED WOOD  
FLOORING IS REAL WOOD

They consist of a decorative hardwood veneer atop a core of premium quality HDF or Pine wood. Product is made using the latest technology to overcome the generic issues of wood

# PlankLOC™

The unique and proven glue less mechanism that makes  
the installation of floors **DURABLE & CONVENIENT**



**PRISTINE**

15mm



**ARBOR**

13mm

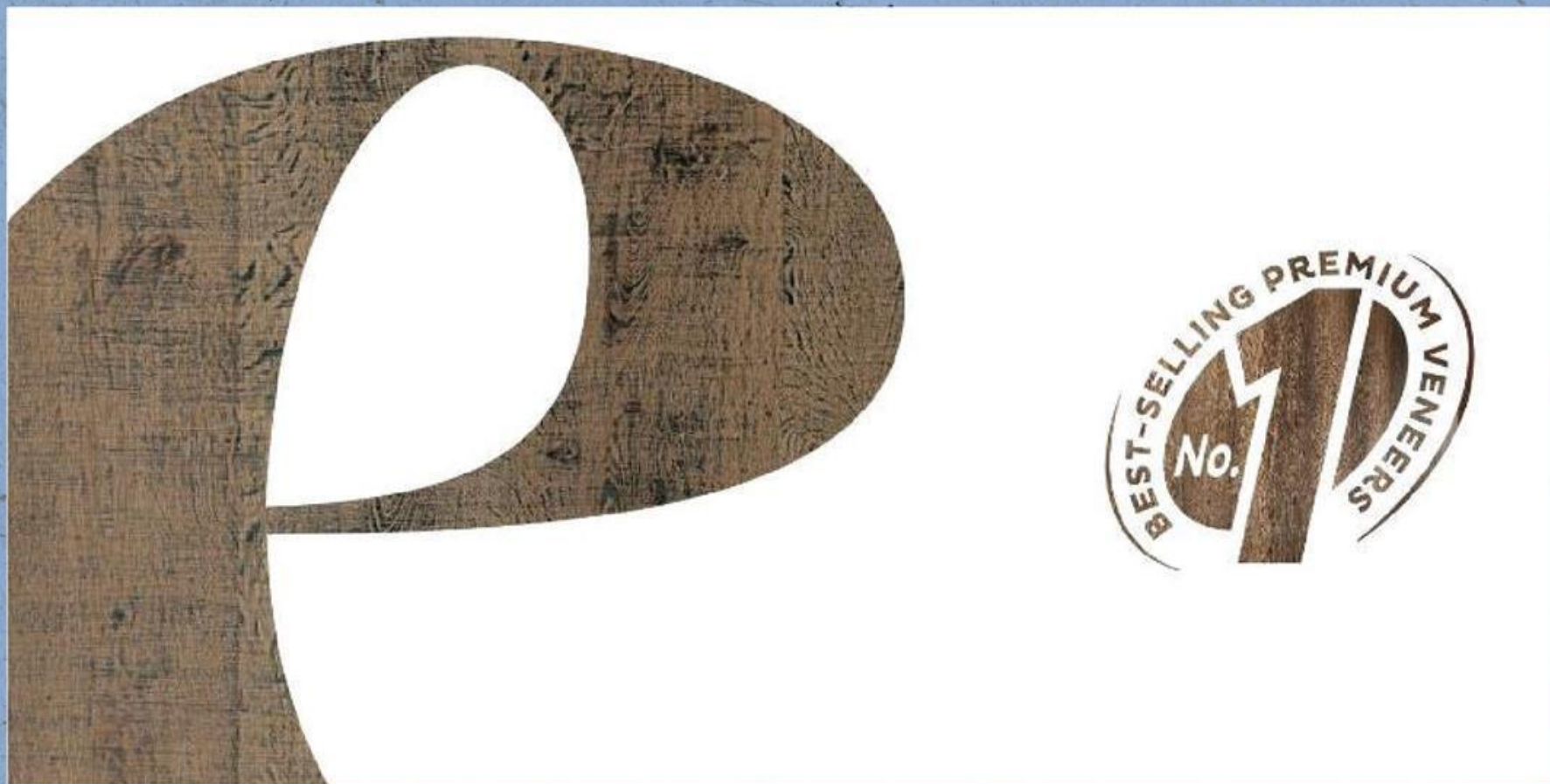


**ATMOS**

10mm



## CELEBRATE THE BEST-SELLING PREMIUM VENEERS IN THE INDUSTRY



**decowood**<sup>TM</sup>  
PREMIUM VENEERS

NATURAL | TEAK | ENGINEERED

## Decowood Veneers

The decorative veneers brand from Greenlam industries, has been carrying forward its legacy since its inception in 2007. It prides itself on being India's largest selling decorative veneers brand. Decowood stands for ethics, innovation and Originality,

The wood used for any Decowood veneer is ethically sourced from the most celebrated wood species around the world, before it can be turned into an intricate piece of art.



# decowood™

PREMIUM VENEERS

NATURAL | TEAK | ENGINEERED





OVER **200** SPECIES

Decowood offers premium veneers made from over 200 species of ethically sourced pristine wood from around the world. Close attention to detail while selecting and crafting these species of wood makes every Decowood veneer a masterpiece

**decowood**<sup>TM</sup>  
PREMIUM VENEERS

NATURAL | TEAK | ENGINEERED



**Water Based Glues**

**Not Illegally Sourced**

**Responsible use of technology and disposable of Fully recyclable waste.**

**EVERY BIT OF DECOWOOD IS ETHICALLY SOURCED FROM THE WORLD OVER**

FSC & PEFC Certified Products

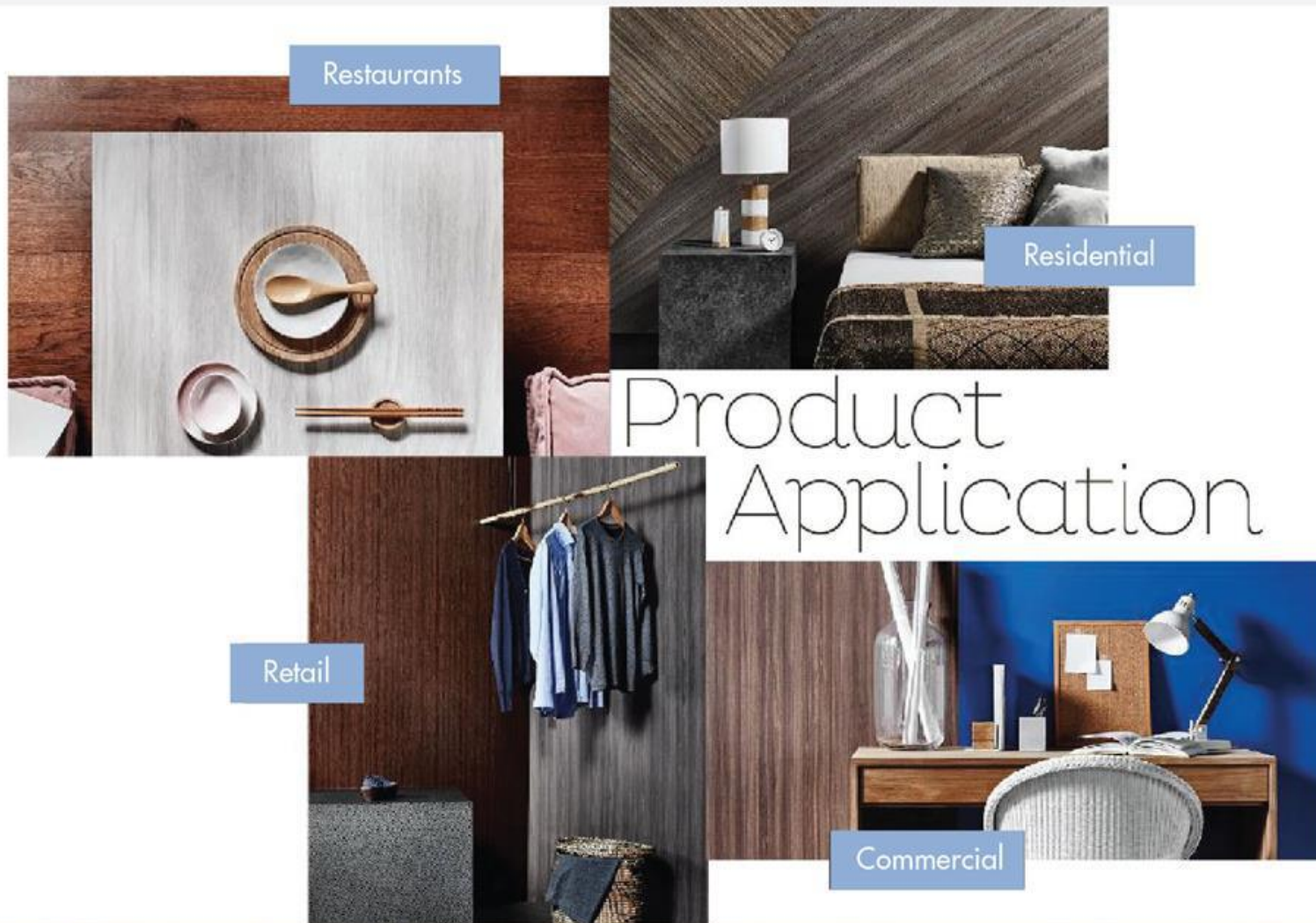
**PEFC™ FSC®**

**RECYCLE**

**decowood™**

PREMIUM VENEERS

NATURAL | TEAK | ENGINEERED



**decowood**<sup>TM</sup>  
PREMIUM VENEERS

NATURAL | TEAK | ENGINEERED



TYPE

Before purchase one should be aware of the **grade of veneer**; which influences the quality of veneer to a large extent in terms of natural defects like knots, mineral streaks, decay, cracks etc.



TREE

The **source/land of origin** of the tree which are from respective forest sources-FSC/PEFC certified.



TEXTURE

Creates lasting **visual impression on the outcome**. The artistic work done on the veneers add to the mystic charm of the interiors.



THICKNESS

The **durability** of a veneer is directly proportional to the thickness of the face veneers.



TREATMENT

Wood being a natural resource **should be fully treated** before and after manufacturing the veneer.



TONE

Tone depends on the type of species and the way wood logs are sawn. The original species lends a unique **tone and character to the veneers**.



for wood  
veneer selection

# PRESTIGIOUS PROJECTS

LACOSTE



GANT



Mercedes-Benz

# PRESTIGIOUS PROJECTS



## EXPLORE SURFACING SOLUTIONS THAT ENSURE SAFETY & HYGIENE ON GREENLAM SPACES WEBSITE



# THANKYOU

**GLOBAL  
HEADQUARTERS**

Corporate Address: Greenlam Industries Limited  
2<sup>nd</sup> Floor, West Wing, Worldmark 1,  
Aerocity IGI Airport, Hospitality District, New Delhi - 110037.  
T: +91-11-42791399.     | [info@greenlam.com](mailto:info@greenlam.com)